

# RHAPSODY for Orchestra

ROGER SESSIONS  
(1970)

Allegro con fuoco (♩ = 144)

Piccolo  
 Flutes 1/2  
 Oboes 1/2  
 English Horn  
 Clarinets Eb  
 Clarinets Bb 1/2  
 Bass Bb  
 Bassoons 1/2  
 Contra Bassoon  
 Horns in F 1/3/4  
 Bb Trumpets 1/2/3  
 Trombones 1/2/3  
 Tuba  
 Timpani  
 Percussion Whip, Chinese Dr., Tamb. Prov.  
 Piano  
 Harp  
 Violins 1/2 non div.  
 Violas non div.  
 Violoncellos non div.  
 Contrabasses

Musical markings include: *sempre*, *mp (sub.)*, *mf sub.*, *mp sub.*, *no. cresc.*, and *Tamb. Prov.*

Fls. 1/2

Obs. 1/2

E. H.

E♭

Clas. B♭

Bass

Brs. 1/2

C. Bn.

Hrn. 1/2

3

Tpts. 1/2

3

Trbs. 1/2

3

Tuba

Timp.

Perc. Tambourine Whp Chinese Dr. Cym. w/ l.v. stop!

Xyl.

Marimba

Piano

Harp

VI. 1 (non div.)

2

Vla. pizz.

Vcl. (arco)

C. Bass (arco)

5

641034

This page of a musical score contains the following elements:

- Top Section (Measures 1-4):** Includes staves for Flute 1 (Fl. 1), Flute 2 (Fl. 2), Clarinet in E-flat (Cl. Eb), Bassoon (Bass.), and Trombone (Tbn.). Dynamic markings include *f molto*, *f*, *molto f*, and *meno f*.
- Middle Section (Measures 5-8):** Includes staves for Violin 1 (Vln. 1), Violin 2 (Vln. 2), Violoncello (Vcllo.), and Contrabasso (Cb.). Dynamic markings include *molto f* and *f*.
- Lower Section (Measures 9-12):** Includes staves for Percussion (Perc.), Chinese Drums (Chinese Dr.), S. O. (Soprano Oboe), Tambourine (Tamb.), and Maracas. Dynamic markings include *f*, *mp*, and *poco*.
- Bottom Section (Measures 13-16):** Includes staves for Viola (Vla.), Violin 1 (Vln. 1), Violin 2 (Vln. 2), and Cello/Double Bass (Vcllo./Cb.). Dynamic markings include *f molto*, *f*, *arco, non div.*, *meno f*, *f poco*, *p*, and *p molto*.

un poco allargando a tempo

(15) (20) 7

Picc. *molto* (a2)

Fls. *molto*

Obs. *poco*

E. H. *poco*

E♭ *molto*

Cl. B♭ *poco* *molto* *f*

Bass *poco* *molto* *f*

Bns. *poco* *molto* *f* a2 *mp-cf*

C. Bn. *p*

Hns. *molto f* *mf sub.*

Tpts. *senza sord.* *con sord.* *molto* *f* *molto* *mf sub.*

Trbs. *mf* *molto* *f* a2 *p*

Tuba *mf* *molto* *f*

Timp. *Sus. Cym.* *f* *molto* *molto*

Perc. *Tam tam* *f* *B.D.* *T. T. I. v.*

Xyl. *molto f* *f*

Marinba. *molto f* *f*

Piano

Harp *Harp* *p*

Vi. 1 *poco f* *f* *molto* *mf*

Vi. 2 *poco f* *f* *molto* *mf*

Vla. *pizz.* *poco f* *f* *molto* *mf* *pizz.*

Vcl. *p* *mf* *f* *molto* *mf* *pizz.*

C. Bass *p* *mf* *f* *molto* *mf* *pizz.*

(15) (20)

*poco rallentando*

The musical score for page 8 is arranged in a standard orchestral format. The instruments are listed on the left side of the page, with their respective staves. The score includes various musical notations such as notes, rests, and dynamic markings. Key markings include *pp* (pianissimo), *p molto* (piano molto), *con sord.* (con sordina), and *poco* (poco). The tempo marking *poco rallentando* is placed at the top of the page. The score is divided into four measures, with a repeat sign at the end of the fourth measure. The instruments are: Picc., Fls. 1 & 2, Obs. 1 & 2, E. H., Eb, Cls. Bb 1 & 2, Bass, Bns. 1 & 2, C. Bn., Hns. 1 & 2, Tpta. 1, 2, & 3, Trbs. 1 & 2, Tuba, Timp., Perc. (Maracas, Wood block), Xyl., Marimba, Piano, Harp, Vl. 1 & 2, Via., Vcl., and C. Bass.

Un poco più tranquillo (♩ = 132)

Picc.   
 Fls. 1 2   
 Obs. 1 2   
 E. H.   
 Eb   
 Cls. Bb 2   
 Bass   
 Bns. 1 2   
 C. Bn.   
 Hns. 1 2 3 4   
 Tpts. 1 2 3   
 Trbs. 1 2 3   
 Tuba   
 Timp.   
 Perc.   
 Xyl.   
 Iarimba   
 Piano   
 Harp   
 Vl. 1 2   
 Vla.   
 Vcl.   
 C. Bass

1. Dutter tongue   
 ordinario   
*p espressivo*   
*mp*   
*ppp*   
*mp*   
*p (molto)*   
*f sub.*   
*mp*   
 (sord.) 1.   
*molto p*   
*(p)*   
 Tamb.   
*pp*   
 (poco)   
*p molto*   
 sul pont.   
 sul pont.   
*pp*   
*poco*   
*p molto*

Picc.

Fis. 1/2

Obs. 1/2

E. H.

E♭

Cis. B♭ 1/2

Bass

Bns. 1/2

C. Bn.

Hns. 1/3, 2/4

Tpts. 1/2, 3

Trbs. 1/2, 3

Tuba

Timp.

Perc. Chinese Dr., Maracas

Vibraphone (motor on)

Marimba

Piano

Harp

VI. 1/2

Vla.

Vcl.

C. Bass

*p molto*, *p poco cresc.*, *mp*, *mp sempre poco cresc.*, *poco animando*

Picc. *cresc. poco f e cresc.*

Fls. 1/2 *a2*

Obs. 1/2 *poco f cresc.*

E. H.

E♭ *f molto*

Cls. B♭ 1/2 *cresc.*

Bass *f molto*

Bns. 1/2 *poco f*

C. Bn. *poco f*

Hns. 1/3 2/4 *cresc. poco*

Tpta. 1/2 3 *senza sord. f molto*

Trbs. 1/2 3

Tuba

Timp.

Perc. *Whip. Tamb. Cym. B. D. (secco)*

Xyl. *poco f*

Vibr. *f molto*

Marimba *f molto poco f*

Piano *cresc. f molto*

Harp *poco f molto*

Vi. *modo ord. f*

Vla. *modo ord. pizz. arco f*

Vcl. *pizz. arco poco f*

C. Bass *arco f*



35 (♩ - ♩ - ♩ - ♩)

Picc.

Fls. 1/2

Obs. 1/2

E. H.

E♭

Cl. B♭ 1/2

Bass

Bas. 1/2

C. Ba.

Hus. 1/3

2/4

Tpts. 1/2

3

Trbs. 1/2

3

Tuba

Timp.

Perc. S. D. Tamb. Maracas

Xyl.

Marimba

Piano

Harp

VI. pizz. poco f

Vla. col legno p molto

Vcl. col legno p molto

C. Bass 1 Solo (arco)

*p molto e poco cresc.*

*p molto*

*poco cresc.*

*p molto*

*con sord.*

*(sord.) p molto*

*p molto*

*(Tamb.)*

*Wood Block p molto*

*p molto*

*p molto*

*p molto*

40

Picc.

Fls. 1/2

Obs. 1/2

E. H.

E♭

Cl. B♭ 1/2

Bass

Bns. 1/2

(1)

C. Bu.

Hus. 1/3

2/4

Tpts. 1/2

3

Trbs. 1/2

3

Tuba

Timp.

Perc.

Marimba

Piano

Harp

VI. 1

2

Vla. modo c

Vcl.

C. Bass

40

40 45

Picc.

Fis. 1/2

Obs. 1/2

E. H.

E♭

Cis. B♭ 1/2

Bass

Bns. 1/2

C. Bn.

Hns. 1/2

Tpts. 1/2

3

Trbs. 1/2   
con sord. *M(mf) (cresc.)* *mf* *mf* *p(mf)* *(poco f)* *(mf)*

3

Tuba   
con sord. *p(mf) (cresc.)* *mf* *p* *mf* *p(mf)* *(poco f)* *(p)*

Timp.

Perc.   
(Wooden Stick) Chinese Dr. *poco f*  
B. D. *p saccato*

Marimba

Piano

Harp

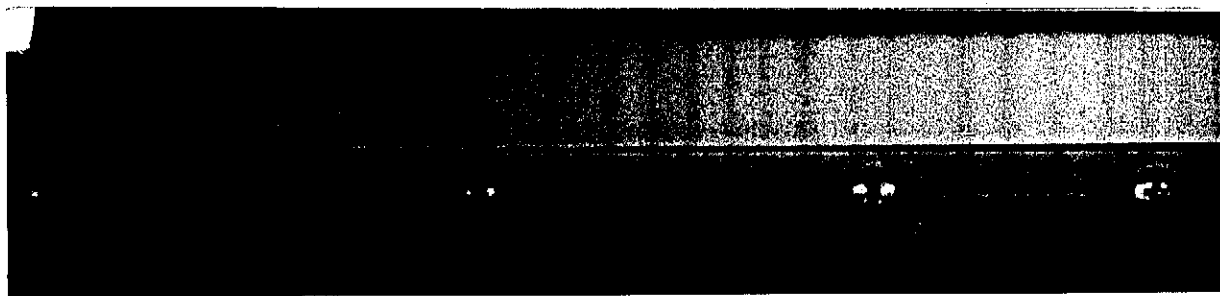
VI. 1   
2

Vla.   
modo ord. *poco mf* *pizz.* *mf* *con sord.*

Vel.

C. Bass   
*pizz.* *p* *mf* *mf* *p* *poco f* *p*

40 45



Picc.

Fis. 1/2

Obs. 1/2

E. H.

E♭

Cl. B♭ 1/2

Bass

Hrs. 1/2

C. Bn.

Hrs. 1/3

2

Tpts. 1/2

3

Trbs. 1/2

3

Tuba

Timp.

Perc. Tamb. prov.

Nyl. Tam tam

Piano

Harp

VI. 1

2

Vla.

Vel.

C. Bass

59

Picc.

Fls. 1/2

Obs. 1/2

E. H.

E♭

Cl. Hb. 1/2

Bass

Bns. 1/2

C. Bn.

Hns. 1/3/4

Tpts. 1/2/3

Trbs. 1/2/3

Tuba

Timp.

Perc.

Xyl.

Piano

Harp

VI. 1/2

Vla.

Vcl.

C. Bass

*mf cresc.* *poco f* *cresc.* *f* *poco*

*mf cresc.* *cresc.* *cresc. sempre* *f*

*poco f* *cresc.* *cresc. sempre* *f* *poco*

*poco f* *cresc.* *cresc. sempre*

*f* *mf* *f* *mf*

*mf* *poco f cresc. (poco f)* *mf* *molto* *f* *molto*

*poco f cresc. (poco f)* *senza sord.* *molto* *molto f*

*(senza sord.)* *molto f*

*poco f mf* *poco* *molto f*

*Sus. Cym.* *Whip.* *molto f*

*mf cresc.* *cresc. sempre* *Chinese Dr.* *f cresc.* *f*

*poco f* *cresc.* *f*

*poco f* *poco*

*arco* *poco f* *cresc.* *cresc. sempre* *mf* *molto f* *poco*

*arco* *molto f*

*arco* *molto f*

*arco* *molto f* *plazz.*

*f* *molto f* *f*

55

Picc.

Fis. 1 2

Obs. 1 2

E. H.

E♭

Cl. B♭ 1 2

Bass

Bsn. 1 2

C. Bn.

Hns. 1 2 3 4

Tpts. 1 2 3

Trbs. 1 2 3

Tuba

Timp.

Perc. Wood Block Cym. *molto f stop stop stop*  
*l.v.*

Xyl.

Marimba

Piano

Harp

VI. 1 2

Vla.

Vel.

C. Bass *arco* *dim*

55

60

Picc.

Fis. 1  
2

Obs. 1  
2

E. II.

E♭

Cls. B♭ 1  
2

Bass

Bas. 1  
2

C. Bn.

Hrs. 1  
3  
2  
4

Tpta. 1  
2  
3

Trbs. 1  
2  
3

Tuba

Timp.

Perc.

Xyl.

Piano

Harp

Vi. 1  
2

Vla.

Vel.

C. Bass

60

*p*

*p molto*

*mp*

*p molto*

*con sord.*

*con sord. p*

*p (mp)*

*con sord.*

*p molto*

*S. D. p molto*

*p*

*p*

*poco*

*poco*

65

Picc.

Fls. 1 2

Obs. 1 2

E. H.

E $\flat$

Cl. B $\flat$

Bass

Bsn. 1 2

C. Bn.

Hrn. 1 2 3

Trpt. 1 2 3

Trbn. 1 2 3

Tuba

Timp.

Perc.

Nyl.

Piano

Harp

VI. 1 2

Vla.

Vcl.

C. Bass

69

70

Picc. *cresc.* *8va* *f molto*

Fls. 1 2 *cresc.* *f molto*

Obs. 1 2 *cresc.* *f molto* (Or)

E. H.

E♭ *cresc.* *f molto*

Cl. B♭ 1 2 *cresc.* *f molto* (Or)

Bass *cresc.* *f molto*

Bsn. 1 2 *cresc.* *f molto* (Or)

C. Bn.

Hrn. 1 3 *a2* *f molto* (Or)

2 4 *al* *f molto* (Or)

3 *senza Sopr.* *cresc.* *f molto* (Or)

Tpts. 1 2 *cresc.* *f molto* (Or)

3 *f molto*

Trbs. 1 2 *f molto* (Or)

3 *f molto* (Or)

Tuba *f molto* (Or)

Timp.

Perc. *Trgl.* *Chinese drum*

Xyl. *molto f* *8va* *f molto*

Piano *cresc.* *f molto*

Harp

VI. 1 *8va* *f molto*

2 *arco* *f molto*

Vla. *arco* *f molto* (Or)

Vcl. *cresc.* *f molto*

C. Bass *cresc.* *f molto*

70 *cresc.*



Picc.

Fls. 1/2

Obs. 1/2

E. H.

E♭

Cl. B♭ 1/2

Bass

Bsn. 1/2

C. Hn.

Hns. 1/3  
2/4

Tpts. 1/2  
3

Trbs. 1/2  
3

Tuba

Timp.

Perc. Tamb. Trgl.  
Maracas

Nyl.

Marimba

Piano

Harp

VI. 1  
2

Vla.

Vcl.

C. Bass

*poco f*

*mp*

*p*

*con sord. 3.*

*poco f (f)*

*mf*

*con sord.*

*p (mp)*

*p (mp)*

*poco a poco rallentando*

*v*

Picc.

Fls. 1/2

Obs. 1/2

E. II.

E♭

Cts. D♭ 1/2

Bass

Bns. 1/2

C. Bn.

Hns. 1 3 2 4

Tpts. 1 2 3

Trbs. 1 2 3

Tuba

Timp.

Perc.

Marimba

Piano

Harp

VL 1 2

Vla.

Vcl.

C. Bass

Wood Block

1. *p molto*

2.

*p* *pp*

1. *mp* *pp*

2. *pp*

*pp* *pp*

con sord. 1.

*p molto(p)*

(sord.)

*p molto(p)*

*pp*

*pp*

Wood Block

*p molto*

*pp*

*mp dim.* *pp*

*mp dim.* *plzz.* *p molto*

(80)

Meno mosso (♩ = 108)

85 *rall. poco*

Picc.

Fls. 1/2

Obs. 1/2

E. H.

E♭

Cls. B♭ 1/2

Bass

Bass 1/2

C. Ba.

Hrs. 1/3

Hrs. 2/4

Tpts. 1/2/3

Trbs. 1/2/3

Tuba

Timp.

Perc.

Marimba

Piano

Harp

(sezza sord.) *mp* *poco f*

*pp* *poco* *mp* *f*

*1. pp esp. poco*

*poco f*

Meno mosso (♩ = 108)

*rall. poco*

VI. 1/2

Vla.

Vel.

C. Bass

*p molto*

*poco sf pp* *molto* *arco*

*poco* **Andante e molto espressivo** (♩ = 96)

B. Cl. *poco* *p*

Hns. *poco*

Harp *poco* *p* *B<sub>4</sub>* *F<sub>4</sub>* *dim.* *F<sub>4</sub>* *G<sub>4</sub>*

VI. 1 *poco* *con sord.* *p cantabile* *poco f* *dim.*

VI. 2 *poco* *pp*

90

Cl. *p* *p* *poco f* *poco* *mf*

B. Cl. *p*

Bsn. 1 *p molto* *mf* *p molto*

Tpts. 1 *con sord.* *pronunciato* *con sord.* *ap*

Harp *p* *E<sub>4</sub>* *pronunciato* *ap*

VI. *p* *poco* *p molto, sempre accompagnando* *poco* *f*

Vla. *con sord.* *p* *con sord.* *p*

Vcl. *con sord.* *p* *cresc.* *p*

C. Bass *con sord.* *p* *continando* *p*

90

*animando*

95 *animato poco* (♩ = 100)

*allargando*

Picc.

Fls. 1/2

Obs. 1/2

E. H.

E♭

Cl. B♭ 1/2

Bass

Hrs.

C. Bn.

Hns. 1/3, 2/4

Tpts. 1/2, 3

Trbs. 1/2, 3

Tuba

Timp.

Perc.

Xyl.

Piano

Harp

Picc.

Fls. 1/2

Obs. 1/2

E. H.

E♭

Cl. B♭ 1/2

Bass

Bns. 1/2

C. Bn.

Hns. 1/2, 3/4

Tpts. 1/2, 3

Trbs. 1/2, 3

Tuba

Timp.

Perc. Chm

Xyl.

Piano

Harp

*animando*

96 *animato poco* (♩ = 100)

*allargando*

VI. 1, 2

Vla.

Vcl.

C. Bass

con sord.

senza sord.

*f poco*

VI. 1, 2

Vla.

Vcl.

C. Bass

senza sord.

pizz.

*f poco*

pizz.

pizz.

pizz.

pizz.

*allargando*

*al tempo del  
Andante (♩ = 96)*

*rit. molto*

Musical score for various instruments including Picc., Fls. 1, Obs. 1, E. H., Eb, Cls. Bb, Bass, Bns. 1, 2, C. Bn., Hns. 1, 2, 3, 4, Tpts. 1, 2, 3, Trbs. 1, 2, 3, Tuba, Timp., Perc. (Chinese Dr., Tamb.), Xyl., Piano, and Harp.

Musical score for Violin 1, Violin 2, Viola, Violoncello, and Contrabass. Includes dynamics like *senza sord.*, *pizz.*, *cresc.*, *arco*, and *con sord. pizz.*

*sempre rallentando*

*Più mosso, con movimento facile e corrente*  
(♩ = 112-116)

Picc. *mf dim. molto* (molto) *pp*

Fls. 1/2 *mf dim. molto*

Obs. 1/2 *p*

E. H.

E♭

Cls. B♭ 1/2 *p molto* (1.) *p molto*

Bass *p* *poco* *p*

Bns. 1/2 *mf* *poco* *p*

C. Bn.

Hns. 1/3 2/4 *(con sord.) 1. p*

Tpts. 1/2 3 *(con sord.) 1. p*

Trbs. 1/2 3

Tuba

Timp. *Marcus mf pp*

Perc.

Vibr. *p molto* *poco* *poco mf*

Marimba

Piano

Harp *p*

Picc. (105)

Fls. 1/2

Obs. 1/2

E. H.

E♭

Cls. B♭ 1/2

Bass

Bns. 1/2

C. Bn.

Hns. 1/3 2/4

Tpts. 1/2 3

Trbs. 1/2 3

Tuba

Timp.

Perc.

Vibr.

Marimba

Piano

Harp

*Più mosso, con movimento facile e corrente*  
(♩ = 112-116)

*sempre rallentando*

Vi. 1 *con sord. pp* *(sord.) V*

Vi. 2 *mf* *pp*

Vla. *mf* *(sord.) pizz.* *(con sord.) pizz.*

Vcl. *pp (sord.) arco*

C. Bass *pp*

Vi. 1 *pp sul pont. (con sord.)*

Vi. 2 *pp sul pont. (con sord.)*

Vcl. *pp sul pont. (con sord.)*

C. Bass

**103** (♩ + ♩ + ♩)

Picc.  
Fls. 1/2  
Obs. 1/2  
Z. H.  
Eb  
Cls Bb 1/2  
Bass  
Ins. 1/2  
Bn.  
Ins. 1/3, 2/4  
pts. 1/2, 3  
Trb. 1/2, 3  
uba  
imp.  
erc.  
ibr.  
rimba  
iano  
arp  
VI. 1  
2  
7la. (con sord.)  
7cl.  
Bass

**104**

con sord. 1.  
con sord. 2.  
(con sord.)  
(con sord.)  
con sord.  
Tam tam  
B.D. (l.v.)  
pp sul pont.  
pp sul pont.  
Bog.  
p molto sempre



III (♩ - ♩ + ♩)

Picc.

Fls. 1/2

Obs. 1/2

E. H.

E♭

Cl. B♭ 1/2

Bass

Bns. 1/2

C. Bn.

Hns. 1/3, 2/4, 3/4

Trpt. 1/2, 3

Trbs. 1/2, 3

Tuba

Timp.

Perc. Tam Tam, B. D., *p molto*

Vibr.

Marimba

Piano

Harp

VI. 1, 2

Vla.

Vcl. (con sord.) arco *mp*

C. Bass

III

poco a poco rallentando

più rall. . . . Andante, come sopra (♩=96)

Picc. 1/2

Fis. 1/2

Obs. 1/2

E. H.

E♭

Cls. B♭ 1/2

Bass

Bus. 1/2

Bn.

Trp. 1/3, 2/4, 3

Trpt. 1/2, 3

Trbn. 1/2, 3

Tuba

Imp.

Cym.

Cyl.

Organo

Arp.

poco a poco rallentando

più rall. . . . Andante, come sopra (♩=96)

Sva. . . . (loco)

Vl. 1/2

Vla.

Cl.

Bass

120

Picc.

Fls. 1/2

Obs. 1/2

E. H.

E♭

Cl. B♭ 1/2

Bass

Bns. 1/2

C. Bn.

Hns. 1/3 2/3 3/3

Tpts. 1/2 3

Trbs. 1/2 3

Tuba

Timp.

Perc.

Xyl.

Piano

Harp

Vi. 1/2

Vla.

Vcl.

C. Bass

120

125 Molto vivace e giocoso (♩ = 112)

This page contains the musical score for measures 125 through 134. The instruments listed on the left are Piccolo, Flutes (1 and 2), Oboes (1 and 2), English Horn, E-flat Clarinet, Bass Clarinet, Bassoon, Bassoon in C, Horns (1, 2, 3, 4), Trumpets (1, 2, 3), Trombones (1, 2, 3), Tuba, Cymbals, Percussion, Xylophone, Vibraphone, Piano, and Harp. The score includes various dynamics such as *pp subito*, *poco*, *p*, *mp*, *mf*, *mp*, *pp*, *molto p*, *senza sord.*, and *con sord.*. It also features performance markings like *rit.*, *ritard.*, and *ritard.*. The tempo is marked as *Molto vivace e giocoso* with a quarter note equal to 112 beats per minute. The key signature has one flat, and the time signature is 2/2. The score is divided into two systems, with the second system starting at measure 134.

130

Picc.

Fls. 1/2

Obs. 1/2

E. H.

E♭

Cls. B♭ 1/2

Bass

Hns. 1/2

C. Bn.

Hns. 1/3, 2/4

Tpts. 1/2, 3

Trbs. 1/2, 3

Tuba

Timp.

Perc. Tamb., B. D., I.v., Hatchet, Marimba, Matacas

Xyl.

Piano

Harp

Vi. 1, 2

Vla.

Vcl.

C. Bass

131

mp, poco f, con sord., f, poco cresc., f secco, sul IV

Picc.  
 Fls. 1  
 Obs. 1  
 E. H.  
 Eb  
 Cls. Bb 1  
 Bass  
 Res. 1/2  
 Bu.  
 Hns 1/3  
 1/1  
 2/2  
 Lpt. 3  
 1/2  
 3/3  
 Tuba  
 Timp.  
 Perc. (Marimba) Whip  
 Syl.  
 Piano  
 arp.  
 Vl. 1  
 2  
 Vla. pizz.  
 Vcl. pizz. arco  
 Bass pizz.

Musical score for page 33, featuring various instruments including Piccolo, Flutes, Oboes, Horns, Clarinets, Basses, Trumpets, Trombones, Percussion (Marimba, Whip), Violins, Viola, Violoncello, and Double Bass. The score includes dynamic markings such as *molto f*, *poco f*, and *senza sord.*, as well as performance instructions like *arco* and *pizz.*

The page contains the following staves and markings:

- Picc.**: Fl. tongue normale
- Fls.**: 1, 2
- Obs.**: 1, 2
- E. H.**: 1, 2
- E♭**: 1, 2
- Cl. B♭**: 1, 2
- Bass**: 1, 2
- Bns.**: 1, 2
- C. Bn.**: 1, 2
- Hns.**: 1, 2, 3, 4
- Tpts.**: 1, 2, 3
- Trbs.**: 1, 2, 3
- Tuba**: 1, 2, 3
- Timp.**
- Perc.**: Tamb. p, Tamb., Whtp, Tamb., Sus. Cym.
- Xyl.**
- Maramba**
- Piano**
- Harp**
- VI.**: 1, 2
- Vla.**
- Vcl.**
- C. Bass**

Dynamic markings include: *f molto*, *poco f*, *mf*, *p*, *pp*, *sub.*, *arco*, *pizz.*, *senza sord.*, *poco*, *pp*, *f*, *mf*, *ff*, *rit.*, *rit. a 2*, *rit. a 4*, *rit. a 8*, *rit. a 16*, *rit. a 32*.

This page of a musical score, numbered 35, contains the following sections and markings:

- Woodwinds:** Eb (E-flat), Bb (B-flat), and Bass (Bassoon) staves. Includes markings like *a2*, *dim.*, and *poco f*.
- Brass:** Trombone (Tromb.) and Trumpet (Tromba) staves. Includes markings like *a2*, *dim.*, *poco f*, and *molto*.
- Percussion:** (Tamb.) (Tambourine) and other percussion staves. Includes markings like *Trgl.* (Trill) and *poco f*.
- Strings:** Violin (Vn.) and Viola (Vla.) staves. Includes markings like *molto*, *dim.*, *poco*, and *Segue*.
- Other:** A *con sord.* (con sordina) marking is present in the Trombone section.



155 *poco a poco allargando*

Obs. 1/2

B. Cl.

Bns. 1/2

C. Bn.

Tpts. 1/2 3

Perc. *poco* Maracas *p* S. D. *p molto*

Nyl.

Piano *ap*

Harp *p alla tabola* *poco sf*

VI. 1 2 *poco a poco allargando*

Vla. *p sul pont.* *segue*

Vcl.

C. Bass

156

160 *sempre poco a poco allargando*

Cl. 1

Bns. 1/2 *a2* *sf p*

C. Bn.

Hn. 2 *cresc.*

Tuba *sf p*

Perc. S. D. *poco* *p* *poco cresc.*

Marimba *ap*

VI. 1 *sempre poco a poco allargando* *con sord.* *sf poco f*

Vla. *con sord.* *sf mp* *sf poco f*

161

Un poco pesante, ma sempre in moto (♩ = ca. 102)

Orchestral score for strings and percussion. The score is divided into two systems. The first system includes:

- Violins I (1st and 2nd parts)
- Violins II (1st and 2nd parts)
- Violas (1st and 2nd parts)
- Vicini (Violas and Violas II)
- Vcllo (Violoncello)
- Bassi (Bassi I and Bassi II)
- S. D. (Sordani)
- Tamb. prov. (Tamborim)
- Cyma. (Cymbals)
- Stacc. (Staccato)
- Woodwinds (partially visible)

Dynamic markings include *cresc.*, *poco f*, *sf*, and *(poco f)*. Performance instructions include *Un poco pesante, ma sempre in moto*, *allarg.*, *rit.*, *stacc.*, and *senza sord.*

Un poco pesante, ma sempre in moto (♩ = ca. 102)

Continuation of the orchestral score, focusing on the woodwinds and strings. The score includes:

- Flutes (1st and 2nd parts)
- Oboes (1st and 2nd parts)
- Bassoons (1st and 2nd parts)
- Clarinets (1st and 2nd parts)
- Trumpets (1st and 2nd parts)
- Trombones (1st and 2nd parts)
- Euphonium and Tubas
- Drum (partially visible)

Dynamic markings include *poco f*, *sf*, and *poco f*. Performance instructions include *senza sord. pizz.* and *col legno*.

Picc.   
 Fls. 1/2   
 Obs. 1/2   
 E. H.   
 Eb   
 Cls. Bb 1/2   
 Bass   
 Hns. 1/2   
 C. Bn.   
 Hns. 1/3/4   
 Tpts. 1/2/3   
 Trbs. 1/2/3   
 Tuba   
 Timp.   
 Perc.   
 Cym.   
 Tamb.   
 Xyl.   
 Marimba   
 Piano   
 Harp   
 Vl. 1/2   
 Vla.   
 Vcl.   
 C. Bass

Musical score for page 38, featuring various instruments including Piccolo, Flutes, Oboes, Clarinets, Basses, Horns, Trumpets, Trombones, Tuba, Percussion, and Strings. The score includes dynamic markings such as *poco*, *f*, *senza sord.*, *arco*, *pizz.*, and *col legno*. It also includes performance instructions like *l.v.* and *f secco*. The page is numbered 38 at the top left and 175 at the bottom right.

icc.

1s. 1/2

2s. 1/2

H.

E♭

1s. B♭ 2

Bass

1s. 1/2

Bn.

ns. 1/2

3

2

3

1/2

3

jba

mp.

Tamb. S. D.

erc.

Trgl.

Tamb. prov. poco (both sticks) cresc.

yl.

Mar. molto

ibr. imba

f molto

8va

ano

arp

7l.

non div. cresc.

arco non div. cresc.

1a.

arco cresc.

cl.

arco

bass

meno f e cresc.

034

*poco accel.* ..... **185** ..... *Tempo del "Molto vivace"* (♩ = 112)

Picc. *p*  
 Fis. *p*  
 Obs. *p*  
 E. H.  
 Eb  
 Cls. Bb 2  
 Bass *p molto*  
 Bsn. *p*  
 C. Bn.  
 Hns. 1 3  
 2 4  
 Tpts. *con sord.*  
 1 *p (mf)*  
 2 *mp (mf)*  
 3 *poco sf (mf)*  
 Trbs. 1 2  
 3  
 Tuba  
 Timp.  
 Perc. Wood Block *p* Wood Block *pp* Tamb. Whip *mp*  
 Vib. Maracas *p* Maracas *mp*  
 Xyl.  
 Marimba  
 Piano *p* *pronunciato* *p molto*  
 Harp *p* D1

*poco accel.* ..... **186** ..... *Tempo del "Molto vivace"*

VI. 1 *pizz.* *arco*  
 2  
 Via. *p* *pizz.* *pp*  
 Vcl. *p* *pizz.*  
 C. Bass



*poco a poco animando*

The score is divided into two systems, each starting with the tempo marking *poco a poco animando*. The first system includes staves for Piccolo, Flutes (1 & 2), Oboes (1 & 2), English Horn, E-flat Clarinet, Clarinets in B-flat (1 & 2), Bass, Bassoon (1 & 2), Contrabassoon, Horns (1, 2, 3, 4), Trumpets (1, 2, 3), Trombones (1, 2, 3), Tuba, Timpani, Percussion (Cymbals, Snare Drum, Chinese Drum, Bongo Drum, Tambourine), Xylophone, Piano, and Harp. The second system includes Violins (1 & 2), Viola, Violoncello, and Contrabass. The score contains numerous musical notations, including dynamics such as *mp*, *mf*, *f*, and *sub.*, as well as performance instructions like *senza sord.*, *arco*, and *poco f*. Measure numbers 195 and 200 are indicated at the beginning and end of the systems.

$\text{♩} = \text{ca. } 120$

Fl. I  
Fl. II  
Ob.  
Cl.  
Bsn.  
Bass  
Tbn.  
Trp.  
Perc.  
Cym. 1.v.  
Maracas  
Chinese Dr.  
Sus. Cym.  
Cym. 1.v.  
Viol. I  
Viol. II

205  
206  
207  
208  
209  
210  
211  
212  
213  
214

*poco f*  
*pp cresc. poco*  
*cresc. poco*  
*sub. p molto*  
*con sord.*  
*pizz.*  
*molto*

$\text{♩} = \text{ca. } 120$





Adagio (♩ = 60)  
Recitativo

210 *rit.* *f molto* *pp* *poco* 215

Picc. *a2* *f molto* *pp* *poco*

Fls. *a2* *f molto* *pp* *poco*

Ohs. *a2* *f molto* *pp* *poco*

E. H. *f molto* *pp* *poco*

Eb *a2* *f molto* *pp* *poco*

Cls. B♭ *a2* *f molto* *pp* *poco*

Bass *a2* *f molto* *pp* *poco*

Hns. *a2* *f molto* *pp* *poco*

C. B. *a2* *f molto* *pp* *poco*

Hns. *a2* *f molto* *pp* *poco*

Tpts. *senza sord.* *f molto* *pp* *poco*

Trbs. *senza sord.* *f molto* *pp* *poco*

Tuba *senza sord.* *f molto* *pp* *poco*

Timp. *f molto* *pp* *poco*

Perc. *Chnese Dr.* *f molto* *pp* *poco*

Vibr. *B. D.* *f molto* *pp* *poco*

Marimba *Whlp* *f molto* *pp* *poco*

Piano *f molto* *pp* *poco*

Harp *f molto* *pp* *poco*

*rit.* *f molto* *pp* *poco* *FFF*

*Adagio* (♩ = 60)  
*Recitativo*

Vi. *f molto* *pp* *poco* *FFF*

Vla. *arco* *f molto* *pp* *poco* *FFF*

Vcl. *arco* *f molto* *pp* *poco* *FFF*

C. Bass *arco* *f molto* *pp* *poco* *FFF*

20

1. 1. 1. 1. 1. 1. 1. 1. 1. 1.

*pizz. p* *poco* *con sord. 1.* *p* *molto* *pp* *Vibraphone (tutor on)* *pp*

*con sord.* *pp* *con sord.* *pp* *pizz.* *arco* *pizz.*

*pizz. p* *pizz. p* *pizz. p* *pizz. p* *pizz. p* *pizz. p* *pizz. p* *pizz. p* *pizz. p* *pizz. p*

\* In case the Vibraphone does not have the possibility of playing the low G as asked for, this passage should be played on the Marimba.

21

*poco animando* *a tempo* *allargando* **21** *Grazioso* ( $\text{♩} = 144$ )

1. 1. 1. 1. 1. 1. 1. 1. 1. 1.

*poco f* *dim.* *poco f* *mf* *pp* *pp* *pp* *pp* *pp* *pp*

*poco f* *senza sord. 1.* *poco f* *con sord. 2.* *mf* *Tamb.* *pp* *pp* *pp* *pp*

*poco animando* *a tempo* *allargando* *Grazioso* ( $\text{♩} = 144$ ) *pp* *pp sempre* *pp sempre* *pp sempre*

*poco f* *dim.* *arco* *pp* *pp* *pp* *pp* *pp* *pp* *pp*

*poco rit.* Adagio (♩ = 60)

23

Picc.

Fis. 1/2

Obs. 1/2

E. H.

E♭

Cls. B♭

Bass

Bns. 1/2

C. Bn.

Hns. 1/3  
2/4

Tpts. 1/2  
3

Trbs. 1/2  
3

Tuba

Timp.

Perc.

Xyl.

Piano

Harp

*poco rit.* Adagio (♩ = 60)

24

VI. 1  
2

Vla.

Vcl.

C. Bass

25

subito Allegro (♩ = 144) 240 a tempo (Adagio)

cc. 1 2

s. 1 2

ss. 1 2

II.

E♭

s. B♭ 1 2

Bass

ts. 1 2

Dn.

1 3

1 2 4

1 2 3

1 2 3

bs. 1 2 3

ba

np.

rc.

ino

rp

subito Allegro (♩ = 144) a tempo (Adagio)

arco

1 2

1 2

a.

l.

ass

24

240

*rit.* Tempo del principio (♩ = 144)

This section of the score includes parts for Piccolo, Flute (1 and 2), Oboe (1 and 2), English Horn, E-flat Clarinet, Clarinet in B-flat (1 and 2), Bassoon, Contrabassoon, Horns (1-3), Trumpets (1-3), Trombones (1-3), Tuba, Timpani, and Percussion. The Percussion part includes Whips, Chinese Drums, and B.D. secco. The score is marked with dynamics such as *p*, *mf*, *pp*, *mp*, *ff*, and *sfz*, and includes performance instructions like *con sord.* and *senza sord.* A rehearsal mark 245 is present at the end of the section.

*rit.* Tempo del principio (♩ = 144)

This section of the score includes parts for Violin I and II, Viola, Violoncello, and Contrabasso. The Violoncello part is marked *arco*. The score is marked with dynamics such as *p*, *mp*, *ff*, and *sfz*. A rehearsal mark 246 is present at the end of the section.